



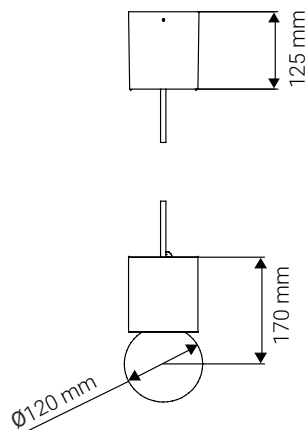
Ellipse

SUSPENDED | PI-LED SERIES

- High-quality pendant luminaire for accent lighting and general illumination in a unique design
- High colour rendition CRI >90
- Low tolerance for colour temperature
- Control mode: DALI DT8
- Integrated overtemperature protection
- Adjustable colour temperature 1.800K - 16.000K
- Adjustable CIE-xy colour points and RGB colours
- Dimming: CCT/CIE-xy 5-100%
- Long life-time up to 50.000 hours

APPLICATION

Fashion Retailers | Art & Exhibitions | DIY | Indoor applications



SPECIFICATIONS

| | |
|------------------------|--|
| Luminous source | PI-LED Downlight Modul |
| Dimensions | Ø120 x 230 mm±1mm |
| Supply voltage | 230VAC |
| Power | 37W |
| LED luminous flux | 2300lm |
| Control mode | DALI DT8 |
| Dimmable | RGB: 0% - 100%; CCT/CIE-xy: 5% - 100% |
| CCT and colour control | 1.800K - 16.000K (CCT values outside the range 2.500-7.000K can be set in the CIE-xy mode) |
| Lifetime | L80/B10@50.000h |
| Type of protection | IP20 |
| Mac Adam tolerance | MacAdam<4 |
| Protection class | I |
| Weight | 2Kg |

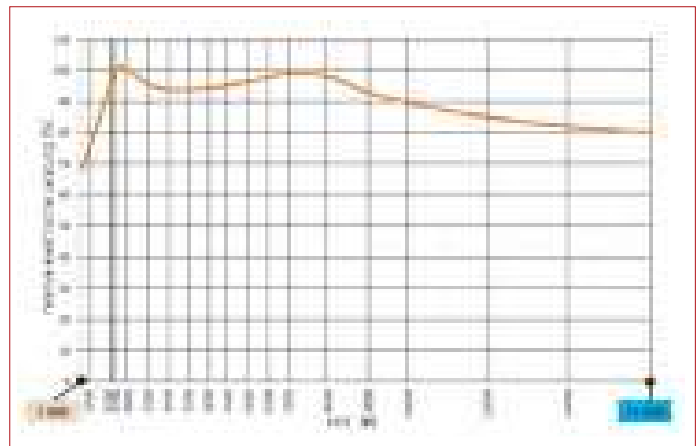
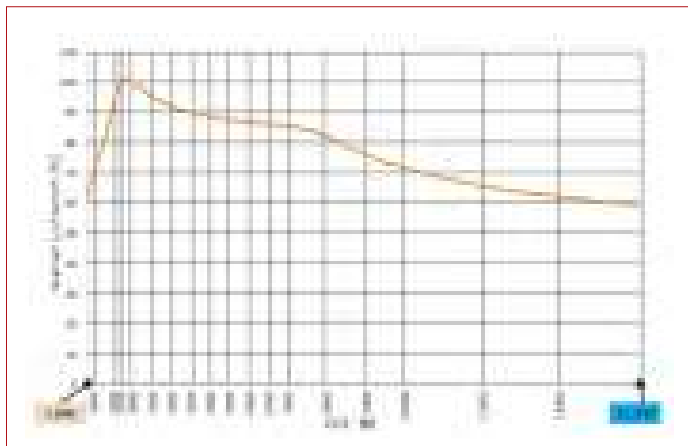
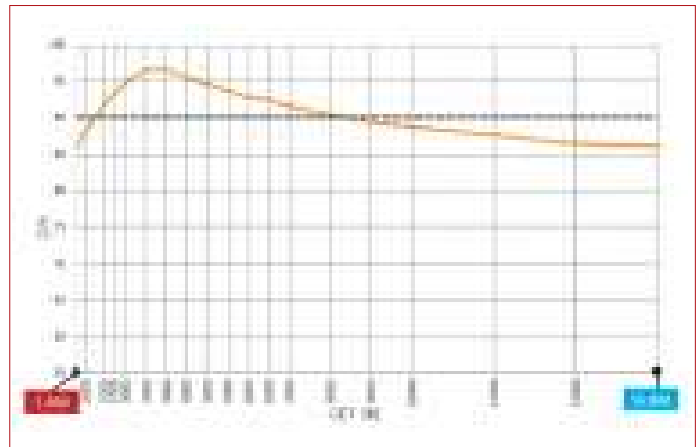
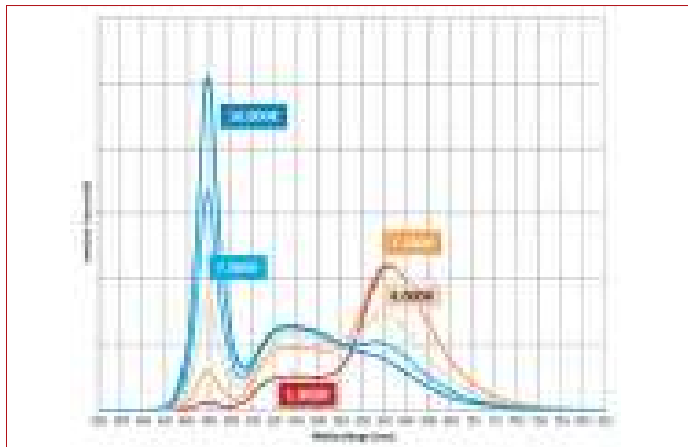
MELANOPTIC EFFECT FACTOR

| CCT (K) | VISUELL | BIOLOGISCH |
|---------|-----------------|--------------|
| | Lichtstrom (lm) | alpha (smel) |
| | PI-LED LAMP | |
| 1.800 | 1650 | 0,226 |
| 2.000 | 1945 | 0,252 |
| 2.500 | 2495 | 0,324 |
| 2.700 | 2400 | 0,357 |
| 3.000 | 2300 | 0,407 |
| 3.500 | 2195 | 0,484 |
| 4.000 | 2130 | 0,554 |
| 4.500 | 2085 | 0,618 |
| 5.000 | 2055 | 0,676 |
| 5.500 | 2040 | 0,728 |
| 6.000 | 2025 | 0,774 |
| 6.500 | 2015 | 0,816 |
| 7.000 | 2010 | 0,852 |
| 8.000 | 2000 | 0,915 |
| 9.000 | 1995 | 0,965 |
| 10.000 | 1990 | 1,033 |
| 12.000 | 1970 | 1,168 |
| 14.000 | 1950 | 1,304 |
| 16.000 | 1935 | 1,439 |

Besides the visual and emotional characteristics of PI-LED HCL lighting, it is above all its biological effect which - following the example of natural daylight - creates healthy light.

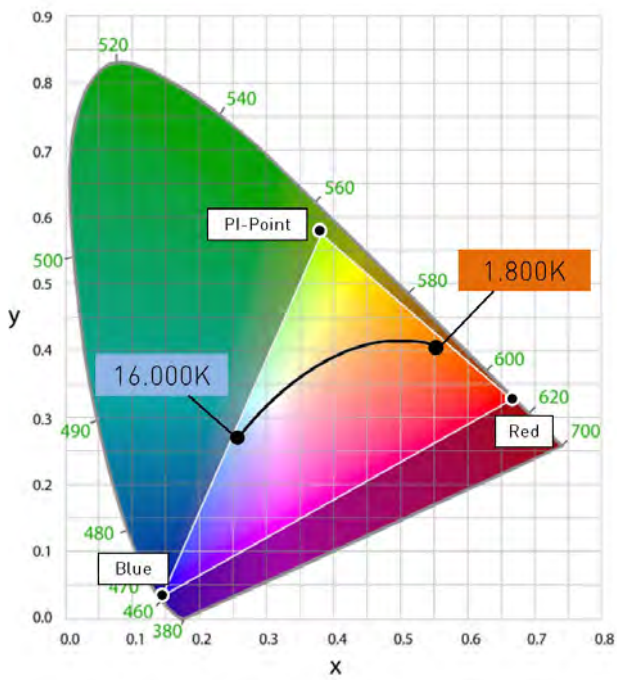
The factor alpha(smel) describes the melanopic effectiveness of the light source on humans and their circadian rhythms. In order to support natural human biorhythms in the best possible way, higher alpha(smel) values can minimise melatonin release during the day, while lower values can promote it in the evening. Lighting that is not only visually but also melanopically effective is made possible by PI-LED.

PHOTOMETRICAL PROPERTIES / VISUAL DATA AND DATA FOR MELANOPIE LIGHT DESIGN



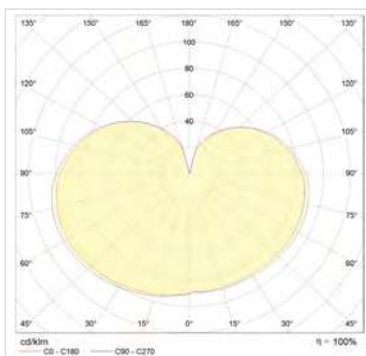
- The actual drop in the luminous flux can vary across the delivered LED modules.
- The diagrams show typical curves and not the exact behaviour of the LED module or the PI-LED system.

COORDINATES AND TOLERANCES ACCORDING TO CIE 1931



Representable PI-LED colour space in the CIE 1931 system. If a colour point outside of the triangle (PI-LED colour space) is set, the closest colour point within the triangle is referenced.

LIGHT DISTRIBUTION



SKU SPECIFICATIONS

| Product Code | Dimensions [mm] | Colour | Lumens [lm] | Power typ./max [W] | CRI | Weight [Kg] |
|--------------------------------|-----------------|--------|-------------|--------------------|-----|-------------|
| CRI90 | | | | | | |
| 2E5001 Ellipse 120/PI/37W/90/W | 120 x 230 mm | PI | 2300 | 37W | 90 | 2 |

REFERENCES

