

Ledge 60x60

RECESSED | TW EM SERIES

The Ledge product family is a set of luminaires especially designed for modern office environments and retail spaces. Ultra-flat housing made out of Aluminum & Polycarbonate. Recessed mounted, easy to install. Simple and compact design that supplies the maximum visual comfort.

The Ledge Family has several series, determined by various add-on and controls:

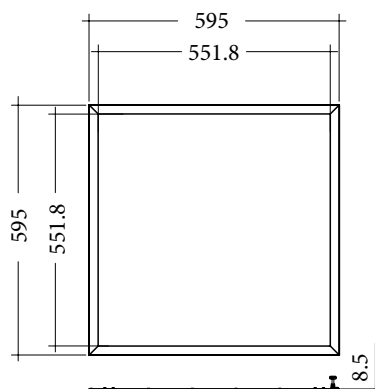
- Ledge TW EM: the tunable white system with adjustable colour temperature and emergency lighting kit

FEATURES & BENEFITS

- CRI ≥ 80 as standard
- Color temperature: TW (2700K - 6500K)
- Long rated life: L80/B10@50.000h
- Luminaire efficiency: 114 lm/W

APPLICATIONS

Grocery & Supermarket | Retail | Office | Healthcare | Hospitality | DIY



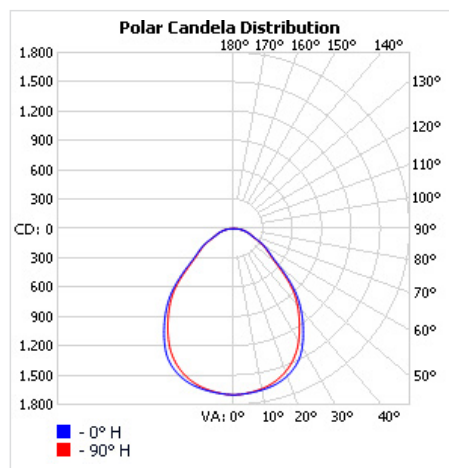
SPECIFICATIONS

Power consumption	31W, 35W, 39W
Dimensions	595 x 595 x 8.5 mm±1mm
Weight	2.9 Kg
Housing materials	Aluminium & Polycarbonate
Protection class	Safety class 2
Power factor	≥0.9
AC Input [Vac]	220 - 240 VAC
Lens angle [°]	90°
Lifespan [h]	50.000
Housing color	○ White - RAL 9003
Lumen maintenance	L80/B10@50.000h at 25°C
IP Rating (General)	IP20
IP Rating (Front facing)	IP20
Control optional	DALI
Warranty [years]	5
Operating temperature range [°C]	-20°C ... +40°C / -4F ... +104F
Emergency option	EM1H, EM3H

Light application	Standard
CRI	CRI 80
CCT [K]	TW (2700K - 6500K)
MacAdam	4

CRI - Color rendering, CCT - Color temperature, MacAdam - Color consistency

LIGHT DISTRIBUTION



A90

RISK GROUP

RG0

The evaluation of photobiological safety is carried out according to the standard IEC 62471:2008 (“Photobiological safety of lamps and lamp systems”). Following the definition of the risk grouping system of the mentioned IEC standard, the LEDs mounted on this family fall into the class “No Risk (RG0 – No photobiological hazard)”. Under real circumstances (regarding exposure time, pupils, observation distance, it is assumed that there is no endangerment to the eye from these devices. As a matter of principle, however, it should be mentioned that intense light sources have a high secondary exposure potential due to their blinding effect.

TOLERANCES

Luminous flux tolerances: -/+ 5%

Consumption tolerance: -/+ 5% for Non-DALI | -/+ 10% for Non-DALI & KIT EM | -/+ 10% for DALI | -/+ 15% for DALI & KIT EM

BATTERY WARRANTY

Non-DALI EM & DALI EM: 12 months warranty

Non-DALI & DALI: -

MAXIMUM NO. OF LUMINAIRES ON A CIRCUIT

Luminaire Power(W)	Control type	Circuit Breaker Type					
		B			C		
		20	16	10	20	16	10
31-39W	DALI	20	16	10	33	26	16

SKU SPECIFICATIONS

Product Code	Dimensions (mm)	CCT (K)	Lumens (lm)	Power (W)	Eff. (lm/watt)	Lens Angle (°)
CRI 80						
213639 Ledge SL 6060/TW/31W/80/A90/EM1H	595 x 595 x 8.5 mm±1mm	TW	3520	31W	114	90°
213640 Ledge SL 6060/TW/35W/80/A90/EM1H	595 x 595 x 8.5 mm±1mm	TW	3920	35W	112	90°
213641 Ledge SL 6060/TW/39W/80/A90/EM1H	595 x 595 x 8.5 mm±1mm	TW	4320	39W	111	90°
213642 Ledge SL 6060/TW/31W/80/A90/EM3H	595 x 595 x 8.5 mm±1mm	TW	3520	31W	114	90°
213643 Ledge SL 6060/TW/35W/80/A90/EM3H	595 x 595 x 8.5 mm±1mm	TW	3920	35W	112	90°
213644 Ledge SL 6060/TW/39W/80/A90/EM3H	595 x 595 x 8.5 mm±1mm	TW	4320	39W	111	90°